

TEST YOURSELF

SECTION A Multiple-choice Questions

(Total 10 marks)

Select the correct response and write the corresponding letter (A, B, C or D) in the brackets provided.

- Which of these statements about the non-flowering plants called ferns is true?
 - A. They are usually found in dry sunny conditions.
 - B. They do not have true roots.
 - C. They do not have true stems.
 - D. Their leaves have spore-producing structures. ()
- Which of the following are characteristics of the non-flowering group of plants called mosses and liverworts?
 - I Have true roots
 - II Have true stems
 - III Have true leaves
 - IV Found in moist and shady areas

A. I and II B. II and III C. III and IV D. IV only ()
- Which of these statements about arthropods is **false**?
 - A. Animals with three pairs of legs are called insects.
 - B. Arthropods have segmented bodies and legs.
 - C. Arthropods are a class of vertebrate animals.
 - D. Animals with four pairs of legs are called spiders. ()
- Which of these classes of vertebrates are warm-blooded?
 - I Amphibians
 - II Birds
 - III Mammals
 - IV Reptiles

A. I and II B. II and III C. III and IV D. III only ()
- Which of these objects was never part of a living thing?
 - A. Diamond ring
 - B. Leather bag
 - C. Pearl necklace
 - D. Silk purse ()
- Which of these classifications of living things is correct?

	Living thing	Classification
A.	Bat	Bird
B.	Eel	Reptile
C.	Toadstool	Fungi
D.	Whale	Fish

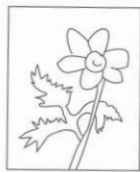
()

7. Below are some terms to describe groups of living organisms. Which shows the correct sequence from the **largest** group to the **smallest** group?
- A. kingdom → family → genus → species
 B. kingdom → species → genus → family
 C. species → kingdom → family → genus
 D. genus → kingdom → species → family ()
8. Bacteria can be both helpful and harmful. Which of the following shows harmful bacteria at work?
- A. Making dairy products like milk and cheese.
 B. Changing wine into vinegar.
 C. Producing antibiotics and hormones.
 D. Breaking down decaying matter like sewage. ()
9. Which of these are advantages of a biodiverse area?
- I. Quicker recovery from natural disaster.
 II. Less likely for a particular animal or plant to die out.
 III. Obtain a wider range of raw material from plants and animals.
- A. I and II B. I and III C. II and III D. All of these ()
10. Fungi like mushrooms are not part of the plant kingdom because they _____.
- A. do not have roots
 B. do not have flowers
 C. do not produce seeds
 D. cannot photosynthesise ()

SECTION B Structured Questions

(Total 30 marks)

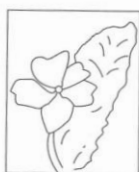
11. Use the dichotomous key to identify these six woodland flowers.



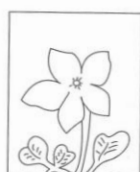
A



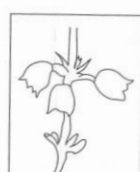
B



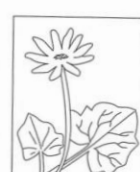
C



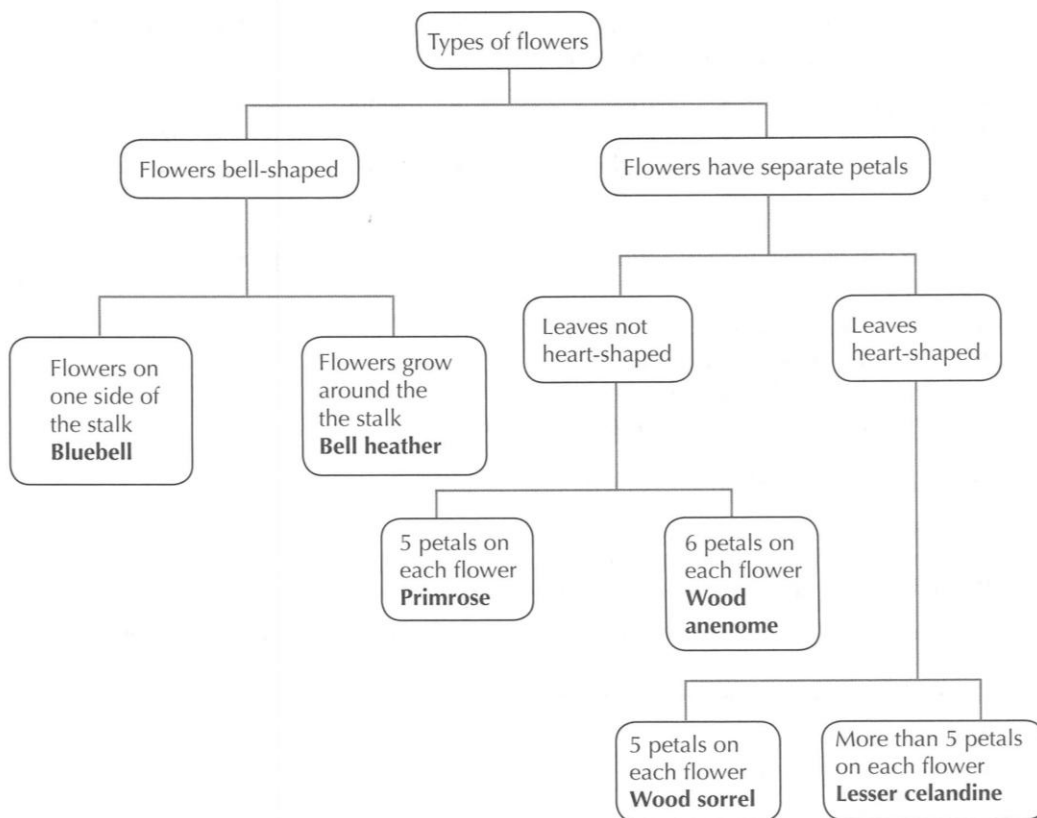
D



E



F



A _____ B _____ C _____

D _____ E _____ F _____ (6 marks)

12. Put these characteristics of vertebrates into their correct vertebrate class (fish, amphibian, reptile, bird, mammal). Use the letter of each statement.

- | | |
|---------------------------------------|--------------------------------------|
| A Live on land and water | B Have feathers and wings |
| C Lay eggs with a hard shell | D Young develop inside mother |
| E Streamlined body with scales | F Eggs laid on water |
| G Young feed on milk | H Gills and fins |
| I Skin covered with dry scales | J Lay eggs with a soft shell |

Fish _____

Bird _____

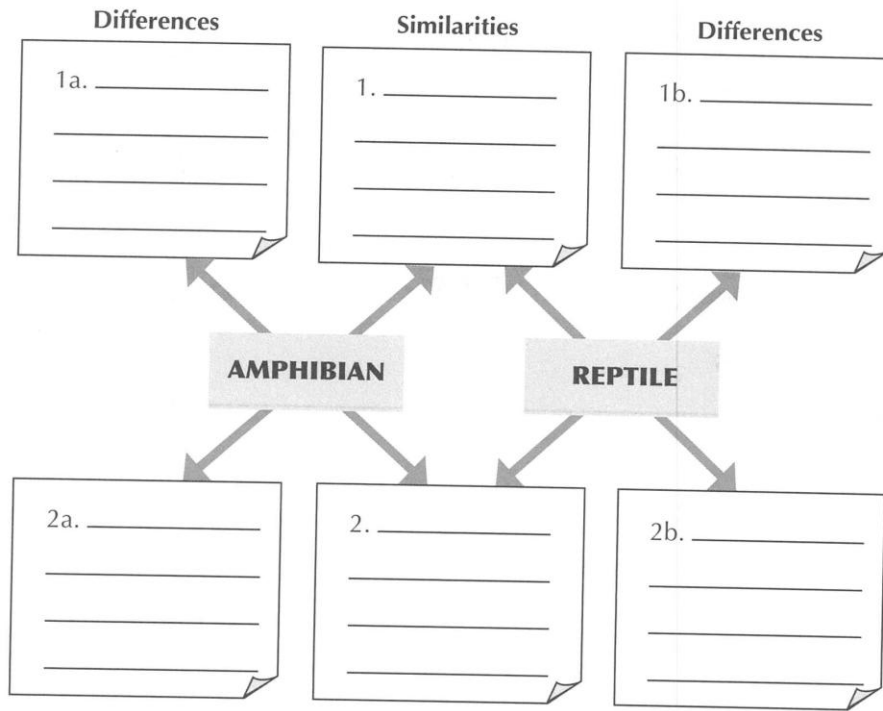
Amphibian _____

Mammal _____

Reptile _____

(5 marks)

13. Complete this graphic organiser to compare an amphibian with a reptile. Give two similarities and two differences.



(4 marks)

14. Construct a dichotomous key in the space provided to identify these nine fish.



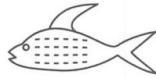
A



B



C



D



E



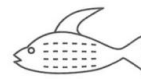
F



G



H



I

(6 marks)

15. Decide which animal is different from the rest in each list, with respect to classification.

(a) Bat, eagle, myna, owl

_____ (1 mark)

(b) Dolphin, sealion, shark, whale

_____ (1 mark)

(c) Beetle, ant, leech, spider

_____ (1 mark)

16. The diagram shows a sea anemone. It is classified as an animal even though it looks like a plant. What are the key features that make it an animal and not a plant?



Sea Anemone

(a) Answer the following simple questions (Yes or No) to answer the above question and identify the key animal features.

- (i) Does it have leaves and stems? _____
- (ii) Does it have green chlorophyll? _____
- (iii) Can it photosynthesise? _____
- (iv) Does it make its own food? _____ (2 marks)

(b) Consider how the sea anemone feeds and compare with how plants feed.

 _____ (4 marks)

The table highlights the learning outcome(s) associated with each question. Fill in your score on the right after you have completed the test. You can then see which areas you need further reading and understanding.

Learning outcome(s)	Question	Marks	Score
6.1(d)	MCQ1	1	
6.1(d)	MCQ2	1	
6.1(e)	MCQ3	1	
6.1(e)	MCQ4	1	
6.1(a)(b)	MCQ5	1	
6.1(b)	MCQ6	1	
6.1(a)(b)	MCQ7	1	
6.1(c)	MCQ8	1	
6.1(a)	MCQ9	1	
6.1(d)	MCQ10	1	
6.1 (d)(f)	11	6	
6.1 (e)	12	5	
6.1(e)	13	4	
6.1 (e)(f)	14	6	
6.1 (e)	15	3	
6.1 (d)(e)	16a	2	
6.1 (d)(e)	16b	4	
	Total	40	