

0

12

Reproduction in Humans

For each question, choose the most suitable option and write the letter (A, B, C or D) in the brackets provided.

Level 1

1. Figure 12.1 shows the side view of the reproductive system in a woman.

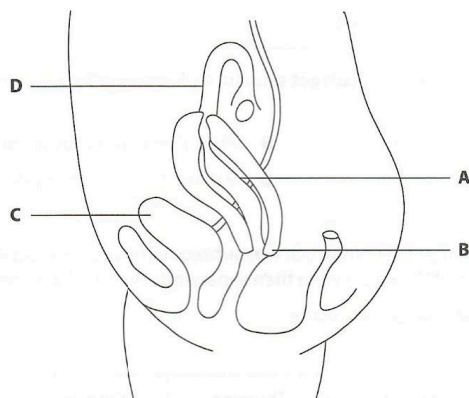


Figure 12.1

In which region, A, B, C or D, will a zygote form?

()

2. How are sperm cells different from ova in humans?

	Size of a Sperm Cell	Number of Sperm Cells Produced Each Time
A	Bigger	Fewer
B	Smaller	Fewer
C	Bigger	More
D	Smaller	More

()

3. Which of the following **correctly** states the numbers of chromosomes in the various cells?

	Cell in the Uterus	Sperm	Ovum	Zygote
A	23	23	23	23
B	46	23	23	46
C	46	23	46	23
D	23	46	46	46

()

4. Which of the following statements about reproduction in humans is **not** correct?

- A A zygote has 23 pairs of chromosomes.
- B A zygote divides and forms an embryo.
- C Implantation of an embryo occurs in the vagina.
- D Progesterone level remains high during pregnancy.

()

Level 2

5. Figure 12.2 shows a male reproductive system of a human.

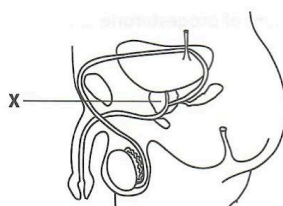


Figure 12.2

What will happen if part **X** is **not** functional?

- A No sperms will be produced.
- B Less testosterone will be produced.
- C The storage of sperms will be affected.
- D There will be less nutrients for the sperms.

()

6. Human Immunodeficiency Virus (HIV) can be transmitted through body fluids.

Identify the body fluids through which HIV can be transmitted.

- 1 Urine
 - 2 Blood
 - 3 Saliva
 - 4 Semen
- A 4 only
B 2 and 4 only
C 3 and 4 only
D 1, 2 and 4 only

()

7. Figure 12.3 shows the thickness of a uterine wall over a few days.

Thickness of uterine wall

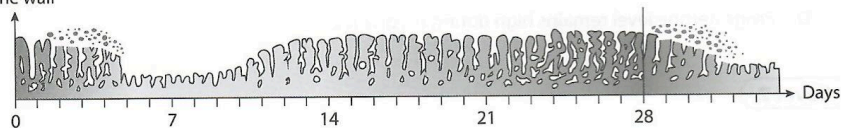


Figure 12.3

During day 14 to day 21, the amount of progesterone _____.

- A increases
B decreases
C is extremely low
D remains the same

()

8. Identify the parts of a male reproductive system that carry out the following functions.

	Produces Sperms	Maintains a Lower Temperature for Sperms	Provides Nutrients for Sperms
A	Prostate gland	Scrotum	Testis
B	Scrotum	Testis	Prostate gland
C	Testis	Scrotum	Prostate gland
D	Prostate gland	Testis	Scrotum

()

9. Figure 12.4 shows a female reproductive system.

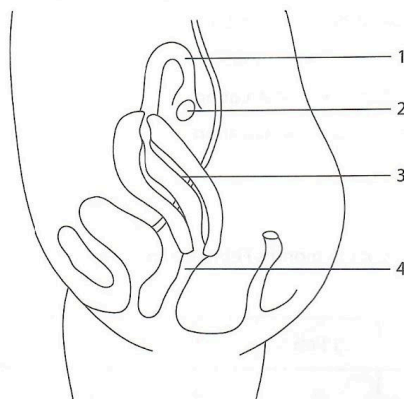


Figure 12.4

In which parts do the following events occur?

	Release of Sperms During Sexual Intercourse	Implantation of an Embryo
A	3	1
B	3	2
C	4	1
D	4	3

()

10. A man had surgery where his sperm ducts were cut and tied. What would be a result of this surgery?

- 1 The man has become sterile.
- 2 The man would not be able to pass urine.
- 3 The man would not be able to produce sperms.
- 4 The male hormones would not be able to reach the blood.

- A 1 only
- B 1 and 3 only
- C 1, 2 and 4 only
- D 1, 2, 3 and 4

()

11. Which of the following shows the **correct** sequence in a female reproductive cycle?

- A Menstruation → fertilisation → ovulation
- B Menstruation → ovulation → fertilisation
- C Ovulation → fertilisation → menstruation
- D Fertilisation → menstruation → ovulation

()

Level 3

12. Table 12.1 shows a calendar of the months February and March.

Table 12.1

		1 Feb	2	3	4	5
6	7	8	9	10	11	12
13	14	15	16	17	18	19
20	21	22	23	24	25	26
27	28	1 Mar	2	3	4	5
6	7	8	9	10	11	12
13	14	15	16	17	18	19
20	21	22	23	24	25	26
27	28	29	30	31		

A woman has her first day of menstruation on 25 February.

She is most likely to conceive if she has sexual intercourse between _____.

- A 1 and 6 March
- B 7 and 12 March
- C 13 and 18 March
- D 19 and 24 March

()

13. A woman was diagnosed with a tumour in her right ovary. So, she had the ovary surgically removed.

Which of the following would the woman **not** experience after the surgery?

- A Fertilisation
- B No more menstruation
- C Release of mature eggs
- D A decrease in oestrogen production

()

14. Figure 12.5 shows the thickness of the uterine lining of a woman over several days.

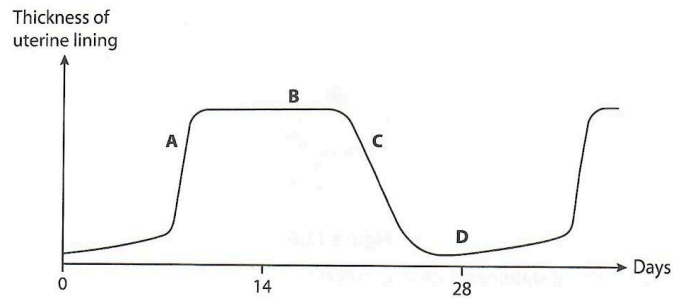


Figure 12.5

During which period, **A**, **B**, **C** or **D**, is the woman most fertile? ()

15. Which of the following ways help to prevent the transmission of HIV?

- 1 Have fewer sexual partners
- 2 Not using expired condoms
- 3 Share needles for injections
- 4 Using a condom during sexual intercourse

A 1 and 3 only

B 1 and 4 only

C 2 and 4 only

D 1, 2 and 4 only

()

16. Sperms deposited in a vagina can live up to five days in the female reproductive system. An ovum can survive for one day after ovulation.

What is the longest possible fertile period in the menstrual cycle?

A Six days

B One day

C Five days

D Four days

()

17. Figure 12.6 shows a sperm entering an ovum during sexual reproduction.

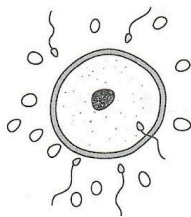


Figure 12.6

Which of the following statements is/are **correct**?

- 1 An embryo is formed.
- 2 This process is called fertilisation.
- 3 This process happens in the uterus.
- 4 The ovum is released during menstruation.

- A** 2 only
B 1 and 2 only
C 2 and 3 only
D 2, 3 and 4 only